

# CERTIFICATE OF LOCATION OF GOVERNMENT CORNER

EAST QUARTER Corner of Section 30, Township 107N, Range 39W

5th Principal Meridian, State of Minnesota, County of MURRAY

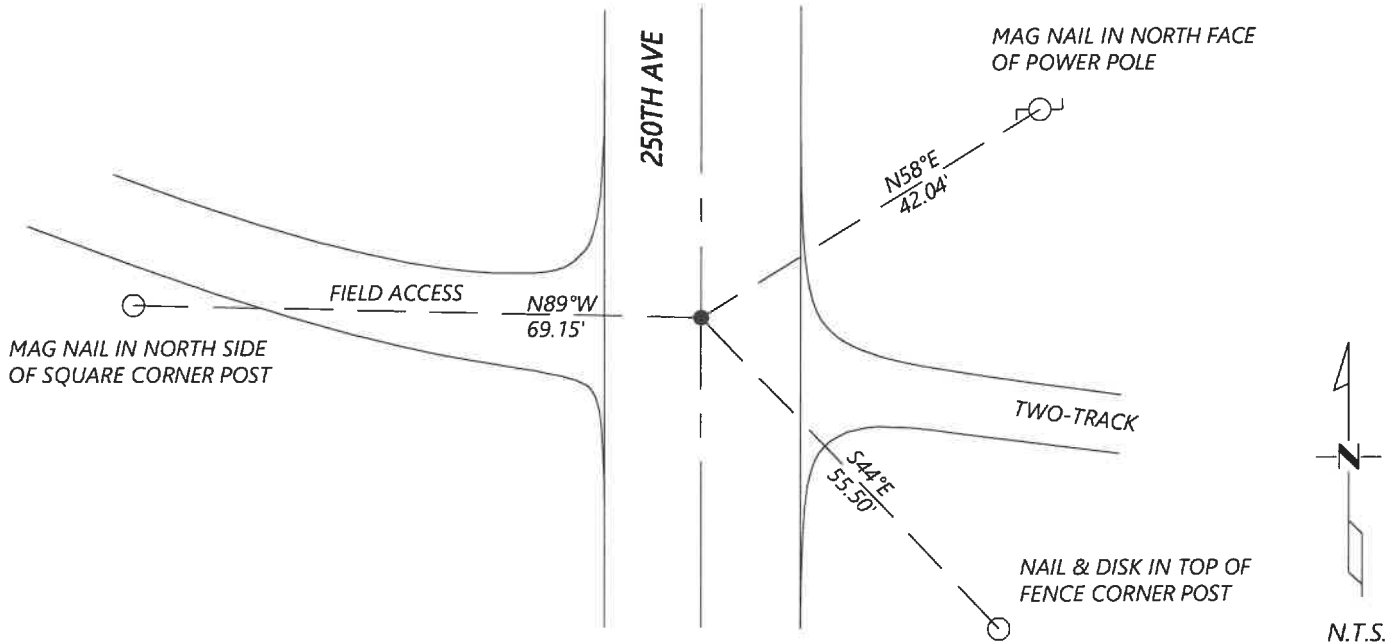
At the corner location shown on the sketch:

On 8/27/2020 found a NO.4 REBAR WITHOUT CAP DOWN 0.6' BELOW GRADE  
DATE

left monument as found       lowered monument       removed monument (explain)

On \_\_\_\_\_ placed a \_\_\_\_\_  
DATE

### SKETCH OF REFERENCE TIES



Statement of evidence for this corner location is on back of this page.

I hereby certify that this document was researched and prepared by me or under my direct supervision and that I am a licensed Land Surveyor under the laws of the State of Minnesota.

Signature *[Handwritten Signature]*

Date 6/16/2021 License No. 45874

Title:

- Land Surveyor       Professional Engineer  
 County Surveyor       County Engineer

#### OFFICE OF THE COUNTY RECORDER

County of Murray

I hereby certify that this document was filed in the Co.

Recorder's office at \_\_\_\_\_ M. on the \_\_\_\_\_ day of \_\_\_\_\_ A.D. 20

County Recorder *[Handwritten Signature: Karen Brown]*

by JUN 22 2021, Deputy

DOCUMENT NO. \_\_\_\_\_

JASON LATZKE  
Minnesota License No. 45874

Statement of Evidence:

East Quarter Corner of Section 30, Township 107 North, Range 39 West, 5th Principal Meridian, Murray County, Minnesota.

*July 1861 GLO Notes: Set post in mound*

*April 1975 Survey record for Section 29 shows a found field stone 2.2ft below grade.*

*March 2005 Highway Department records show a found iron stake at the corner.*

*April 2011 Corner certificate by LS43844 shows a found  $\frac{1}{2}$ " iron at the corner. He lists the Murray County coordinates (1999 adj.) as: N: 171409.15 E: 553592.91*

*Sept 2020 Westwood Professional Services searched and found No. 4 rebar and 1 reference tie from 2011 corner certificate. Coordinates from 2011 certificate also fit. Set 2 additional reference ties.*

Analysis of the recovered data, field evidence and survey measurements, indicates that the monument found is the correct perpetuation of this corner. For additional information concerning this corner please contact Westwood Professional Services.